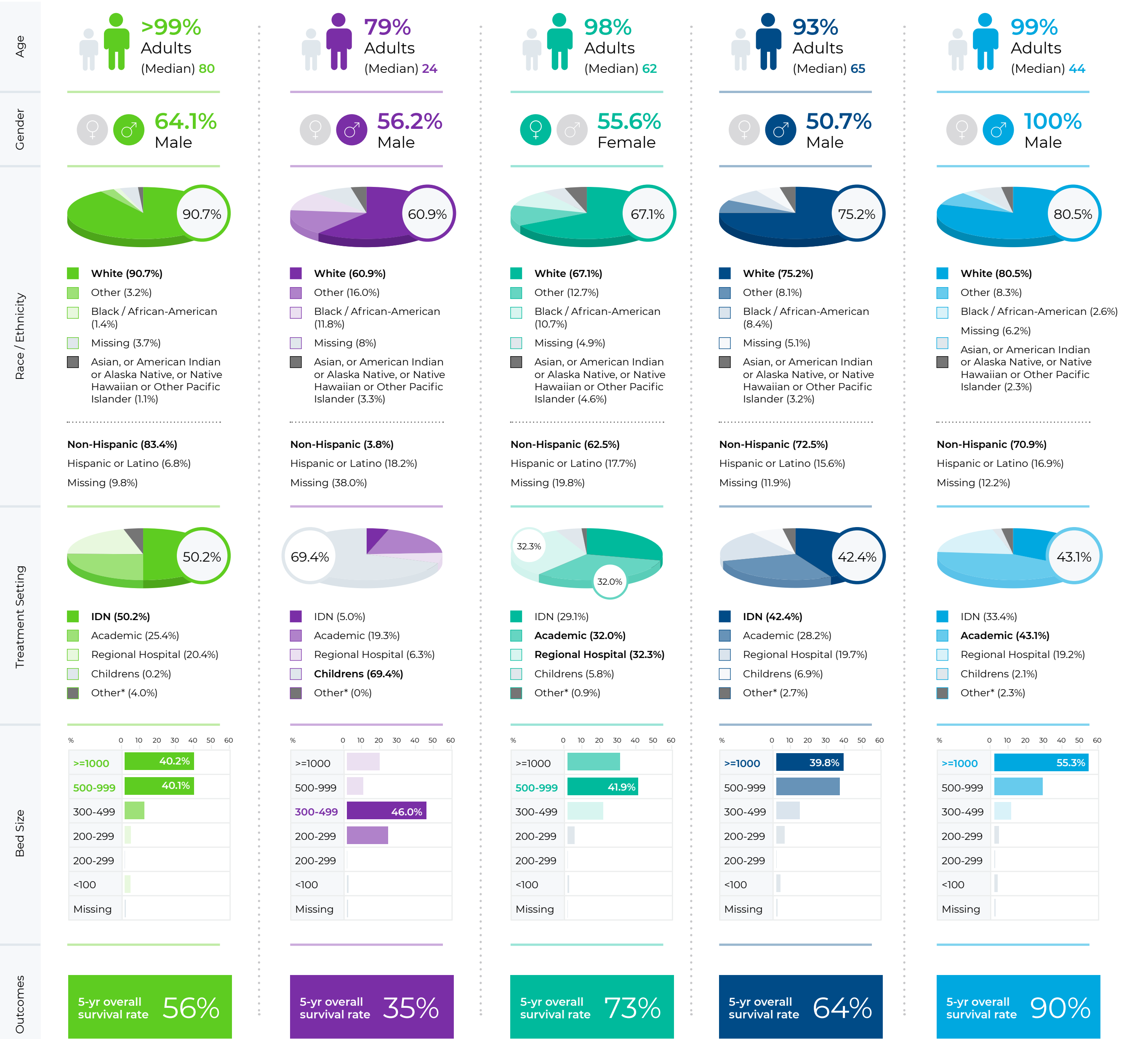
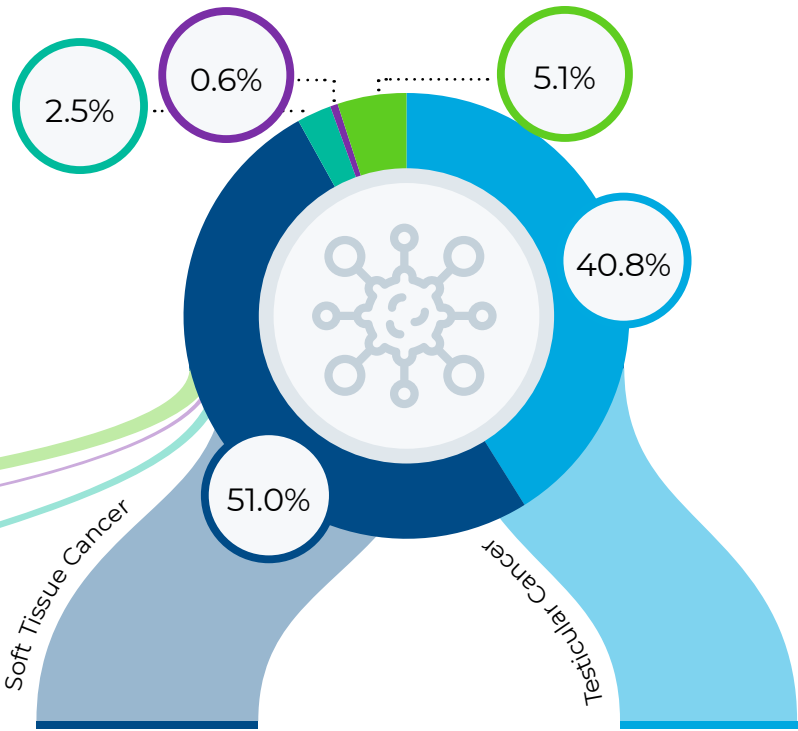


Rare But Real: A Closer Look at Five Rare Cancers

Every tumor has its own story. This Rare Cancer Day, **we have delved into electronic health records from Cerner Real World Data to reveal the intricate narratives of five rare tumors.** From the diverse demographics of those affected, to the facilities that offer care, and outcomes, our data provides a view into the landscape and experiences of patients with certain rare cancers.

- Merkel Cell Skin Cancer (N=2911)
- Osteosarcoma (N=363)
- Pituitary Endocrine Cancer (N=1395)
- Soft Tissue Cancer (N=28486)
- Testicular Cancer (N=22738)



*Other treatment settings: Community Hospital, Community Healthcare, Critical Access, Community Health, Specialty Hospital, Regional Health System

The Cerner Enviza EHR data is the source data utilized for the rare cancer cohort. Patients were considered if they had a diagnosis code for one of the 5 rare cancers of interest. The [Cerner Enviza EHR data](#) is a US based data set that includes data from over 100 million patients extracted from the EHR of hospitals and clinics who have consented to use. The data is deidentified and in compliance with the Health Insurance Portability and Accountability Act.

About Cerner EnvizaSM
Cerner Enviza aims to accelerate the discovery, development and delivery of extraordinary insights and therapies to improve everyday health for all people globally. By combining decades of innovation, life sciences knowledge and collaborative research, Cerner Enviza provides data-driven solutions and expertise that helps bring remarkable clarity to healthcare's most important decisions. For more information on Cerner Enviza, visit www.cernerenviza.com. For more information, please contact info@cernerenviza.com.